

Design Area B
 Direct defences
 Two-stage channel
 Channel reprofiling
 Culvert upgrades

Design Area A
 Direct defences

Design Area C
 Direct defences
 Channel restoration

LEGEND

 Design Areas

0.5% AP (200 year) +CC SoP

Contains Ordnance Survey (C) Crown copyright and database right 2019

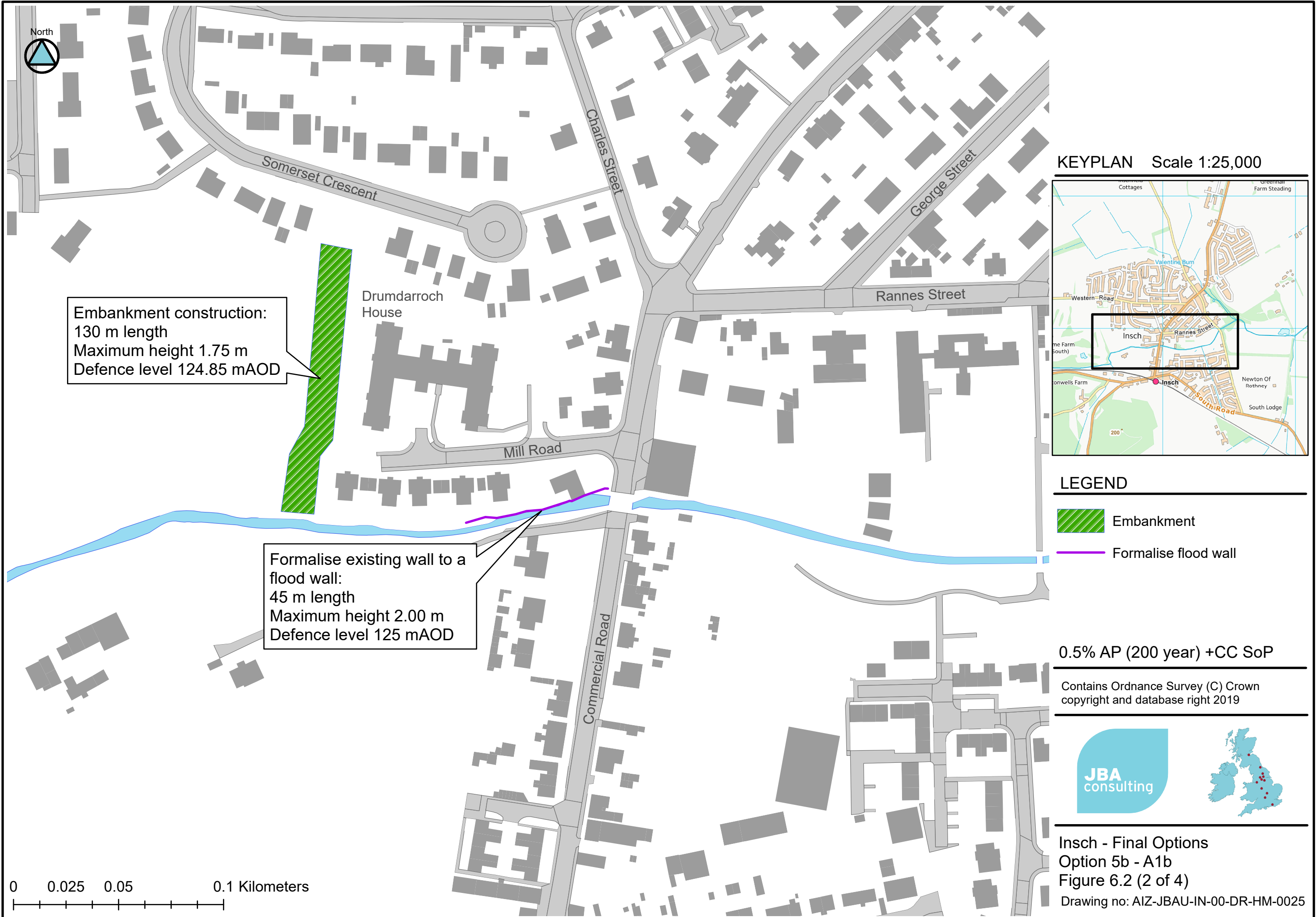


Inch - Final Options
 Option 5b - Key Plan
 Figure 6.1 (1 of 4)

Drawing no: AIZ-JBAU-IN-00-DR-HM-0028

0 0.25 0.5 1 Kilometers

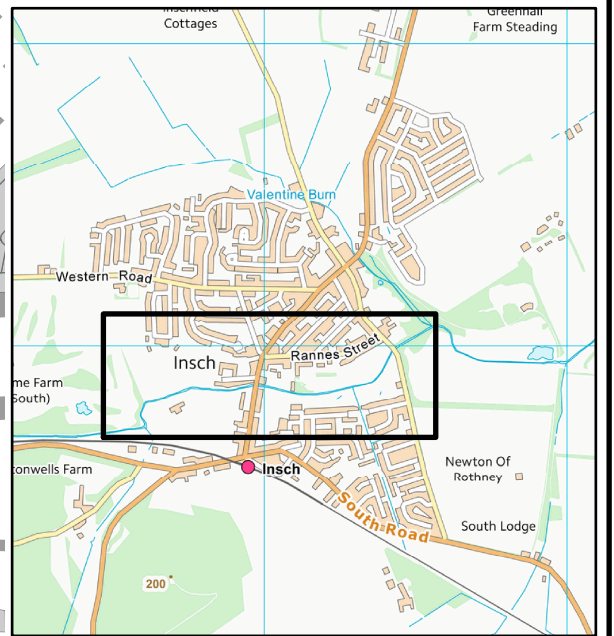
Westfield Farmhouse





Embankment construction:
 130 m length
 Maximum height 1.75 m
 Defence level 124.85 m AOD

Formalise existing wall to a
 flood wall:
 45 m length
 Maximum height 2.00 m
 Defence level 125 m AOD

KEYPLAN Scale 1:25,000



LEGEND

-  Embankment
-  Formalise flood wall

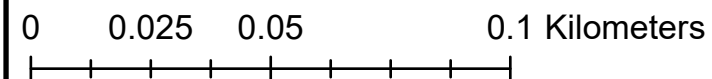
0.5% AP (200 year) +CC SoP

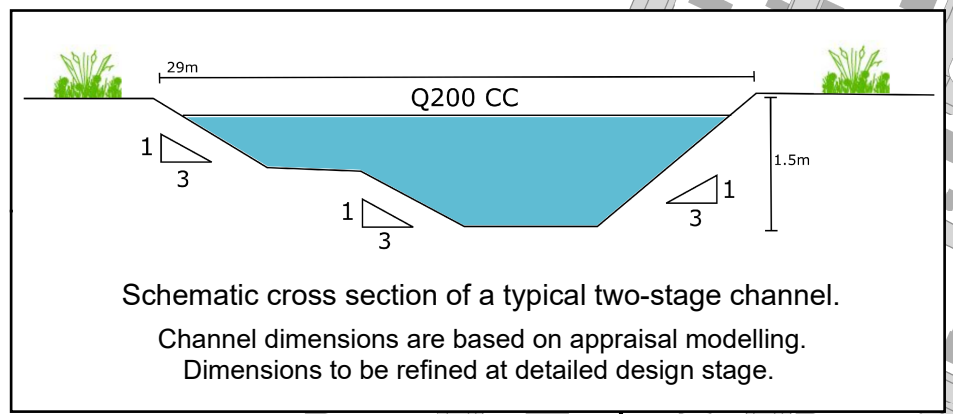
Contains Ordnance Survey (C) Crown
 copyright and database right 2019



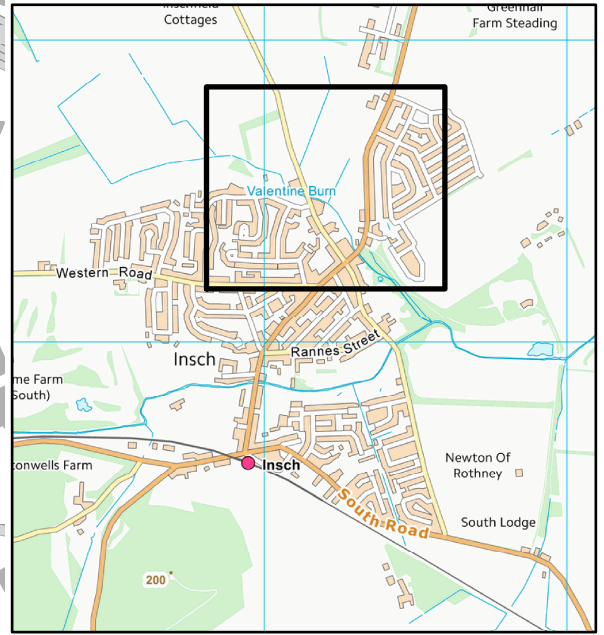
Insch - Final Options
 Option 5b - A1b
 Figure 6.2 (2 of 4)

Drawing no: AIZ-JBAU-IN-00-DR-HM-0025





KEYPLAN Scale 1:25,000



Embankment construction:
100 m length.
Maximum height 1.6 m.
Defence level 125 mAOD.

Flood wall:
150 m length.
Maximum height 1.1 m.
Defence level 125 mAOD.

Market Street culvert replacement:
4 m (w) x 1.5 m (h) x 14 m length.
Road closure required.

Two stage channel.
Approx. 170 m reach.

Embankment construction:
70 m length.
Maximum height 0.9 m.
Defence level 122 mAOD.

Drumrossie Street culvert replacement:
4 m (w) x 1.5 m (h) x 11 m length.
Road closure required.

Channel reprofiling:
lower bed elevations by an average
of 0.74 m for a distance of 235 m.
Channel will need marginally widened.

LEGEND

- Culvert upgrades
- Wall
- Embankment
- Channel reprofiling
- Two stage channel

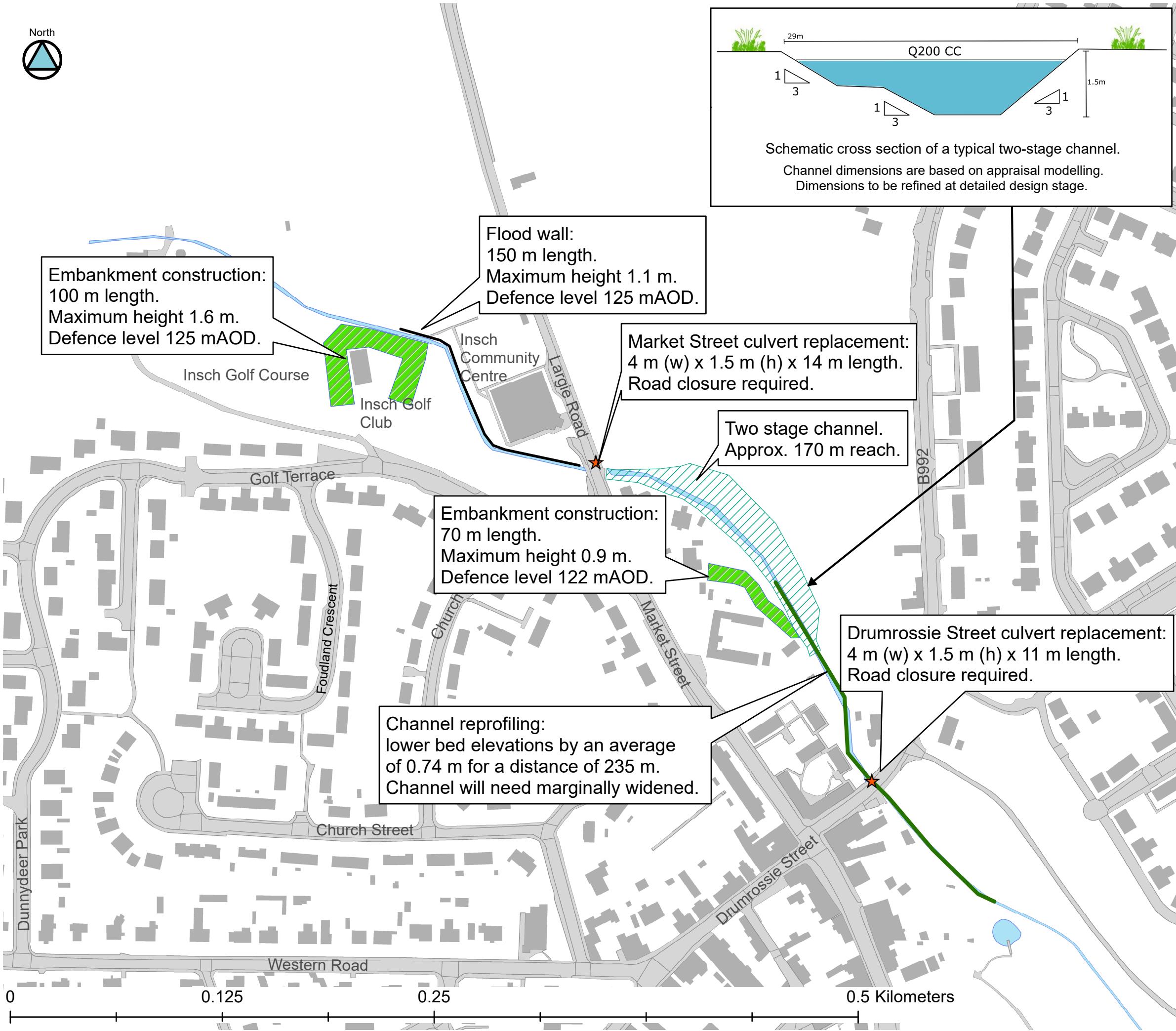
0.5% AP (200 year) +CC SoP

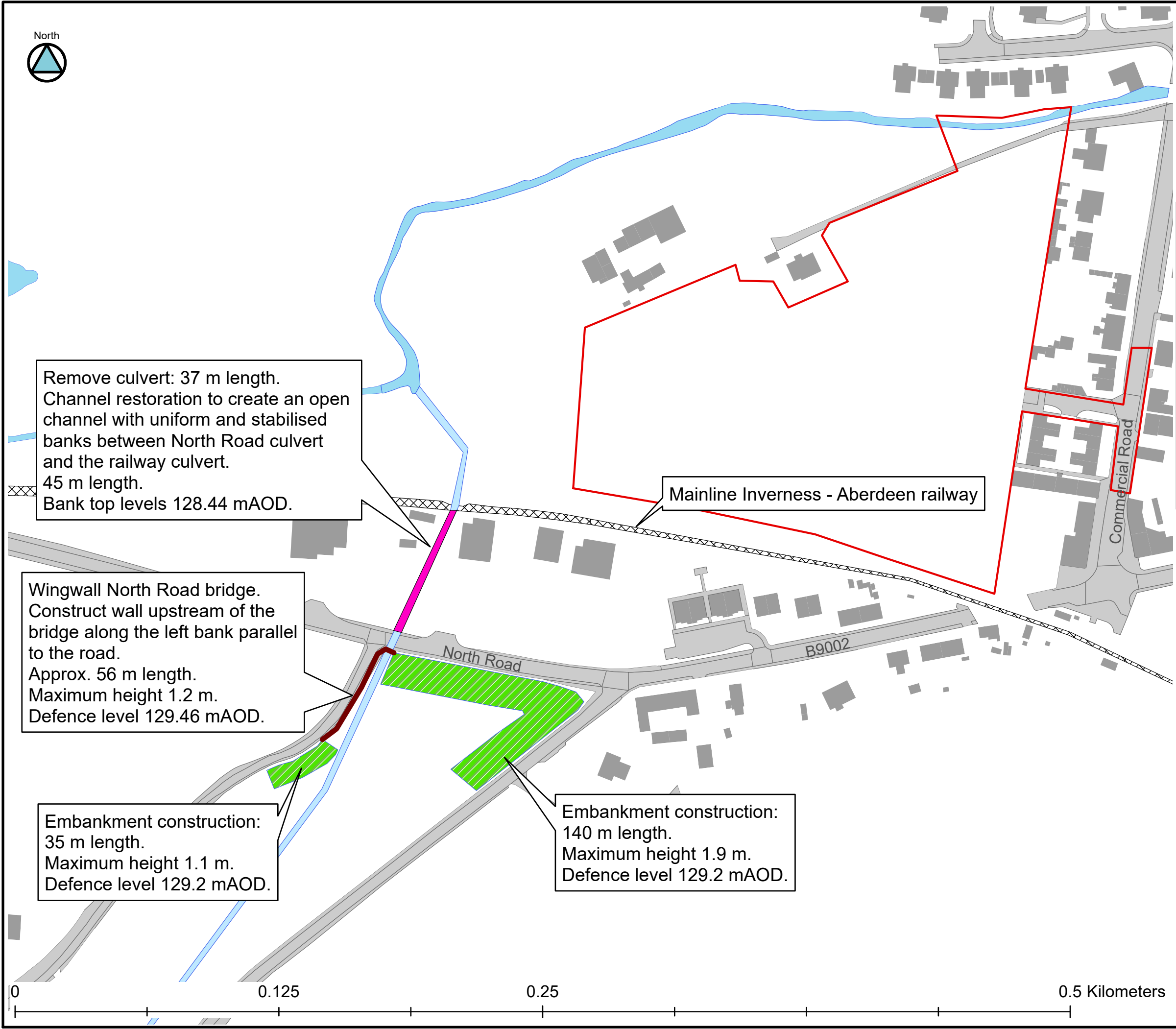
Contains Ordnance Survey (C) Crown copyright and database right 2019



Insch - Final Options
Option 5b - B5b
Figure 6.3 (3 of 4)

Drawing no: AIZ-JBAU-IN-00-DR-HM-0026





Remove culvert: 37 m length.
 Channel restoration to create an open channel with uniform and stabilised banks between North Road culvert and the railway culvert.
 45 m length.
 Bank top levels 128.44 mAOD.

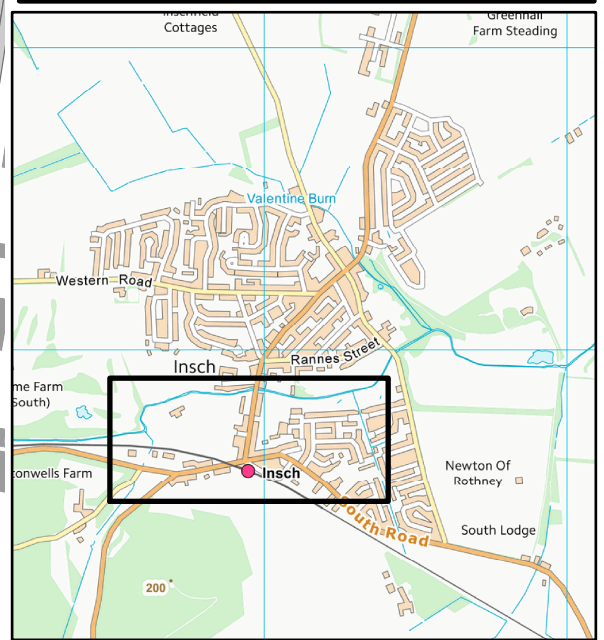
Wingwall North Road bridge.
 Construct wall upstream of the bridge along the left bank parallel to the road.
 Approx. 56 m length.
 Maximum height 1.2 m.
 Defence level 129.46 mAOD.

Embankment construction:
 35 m length.
 Maximum height 1.1 m.
 Defence level 129.2 mAOD.

Embankment construction:
 140 m length.
 Maximum height 1.9 m.
 Defence level 129.2 mAOD.

Mainline Inverness - Aberdeen railway

KEYPLAN Scale 1:25,000



LEGEND

- Wall
- Development area (housing)
- Embankment
- Open channel

0.5% AP (200 year) +CC SoP

Contains Ordnance Survey (C) Crown copyright and database right 2019



Insch - Final Options
 Option 5b - C1
 Figure 6.4 (4 of 4)

Drawing no: AIZ-JBAU-IN-00-DR-HM-0027

