

Design Area A
Direct defences

Design Area B
US storage
Two-stage channel
Culvert upgrades
Direct defences

Design Area C
Direct defences
Channel restoration

LEGEND

 Design Areas

0.5% AP (200 year) +CC SoP

Contains Ordnance Survey (C) Crown copyright and database right 2019

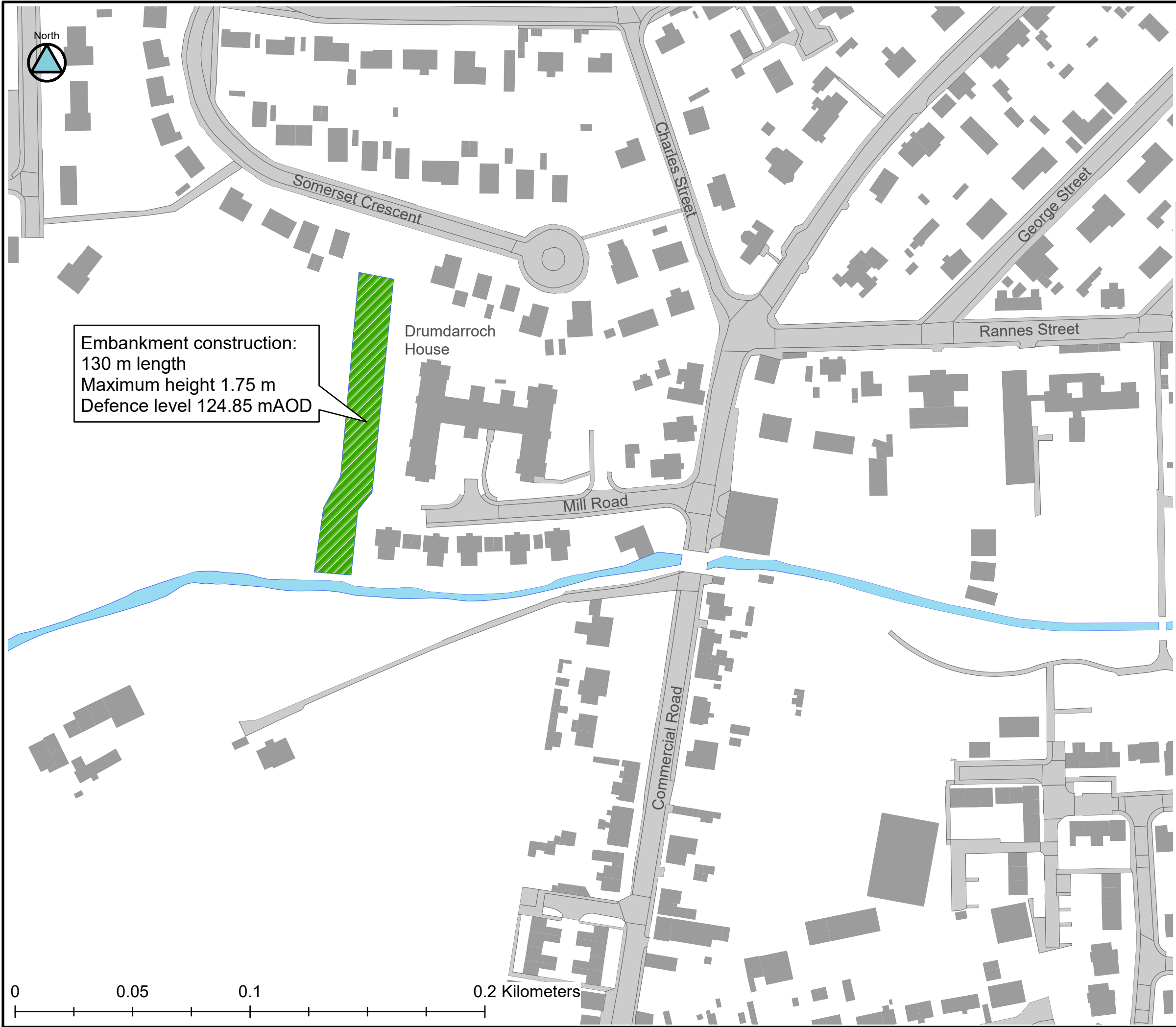


Insch - Final Options
Option 2 - Key Plan
Figure 2.1 (1 of 4)

Drawing no: AIZ-JBAU-IN-00-DR-HM-0017

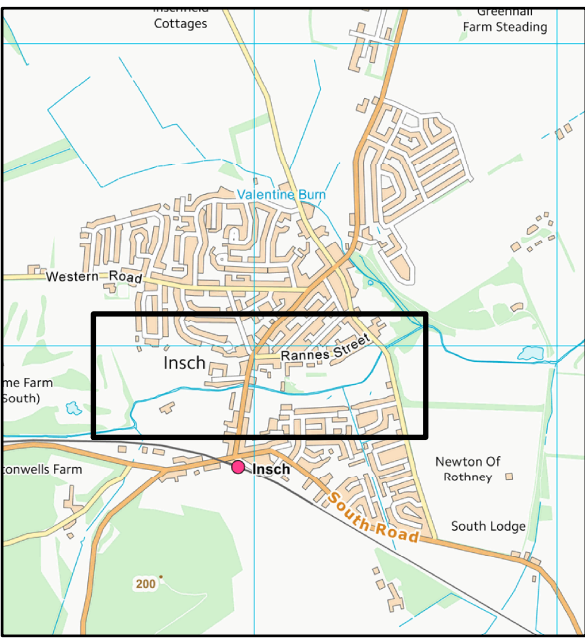


Westfield Farmhouse




Embankment construction:
 130 m length
 Maximum height 1.75 m
 Defence level 124.85 mAOD

KEYPLAN Scale 1:25,000



LEGEND

 Embankment

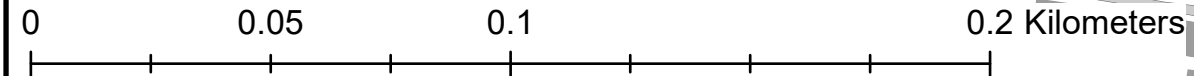
0.5% AP (200 year) +CC SoP

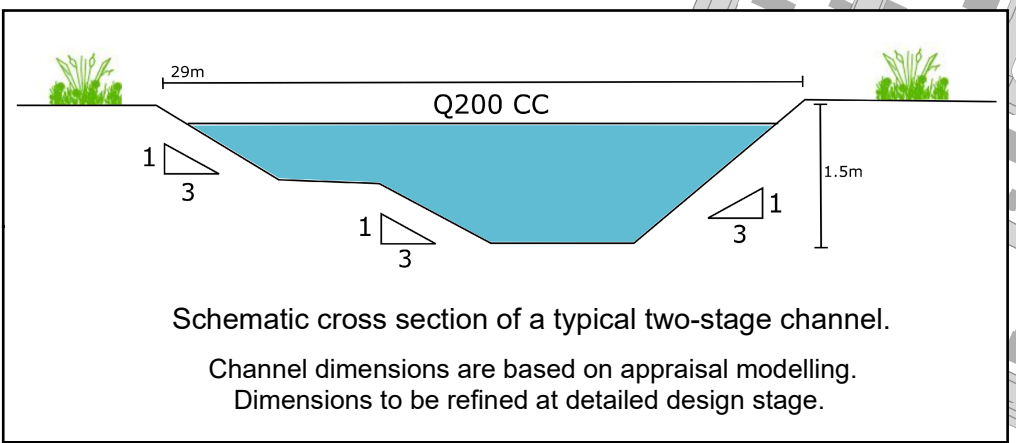
Contains Ordnance Survey (C) Crown copyright and database right 2019



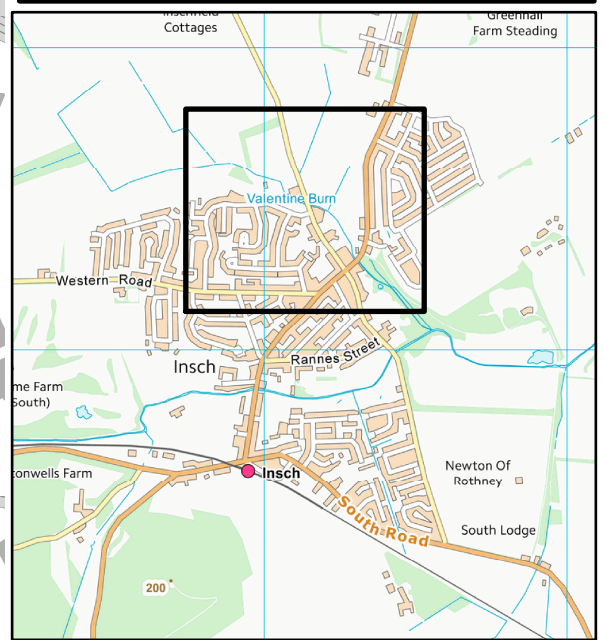
Insch - Final Options
 Option 2 - A1a
 Figure 2.2 (2 of 4)

Drawing no: AIZ-JBAU-IN-00-DR-HM-0005





KEYPLAN Scale 1:25,000



LEGEND

- Culvert upgrades
- Embankment
- Two stage channel

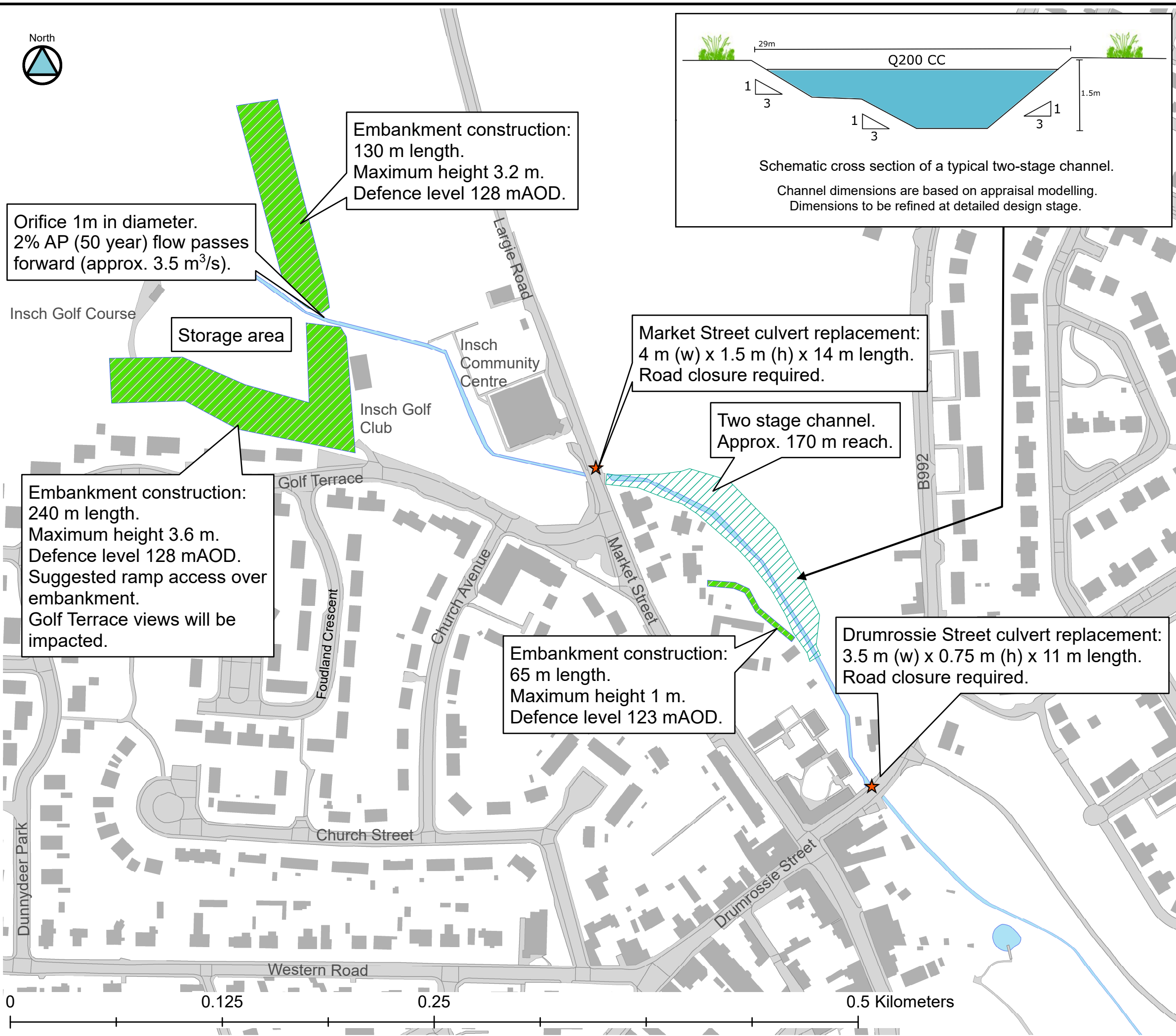
0.5% AP (200 year) + CC SoP

Contains Ordnance Survey (C) Crown copyright and database right 2019



Insch - Final Options
Option 2 - B3
Figure 2.3 (3 of 4)

Drawing no: AIZ-JBAU-IN-00-DR-HM-0006



Embankment construction:
130 m length.
Maximum height 3.2 m.
Defence level 128 mAOD.

Orifice 1m in diameter.
2% AP (50 year) flow passes
forward (approx. 3.5 m³/s).

Storage area

Market Street culvert replacement:
4 m (w) x 1.5 m (h) x 14 m length.
Road closure required.

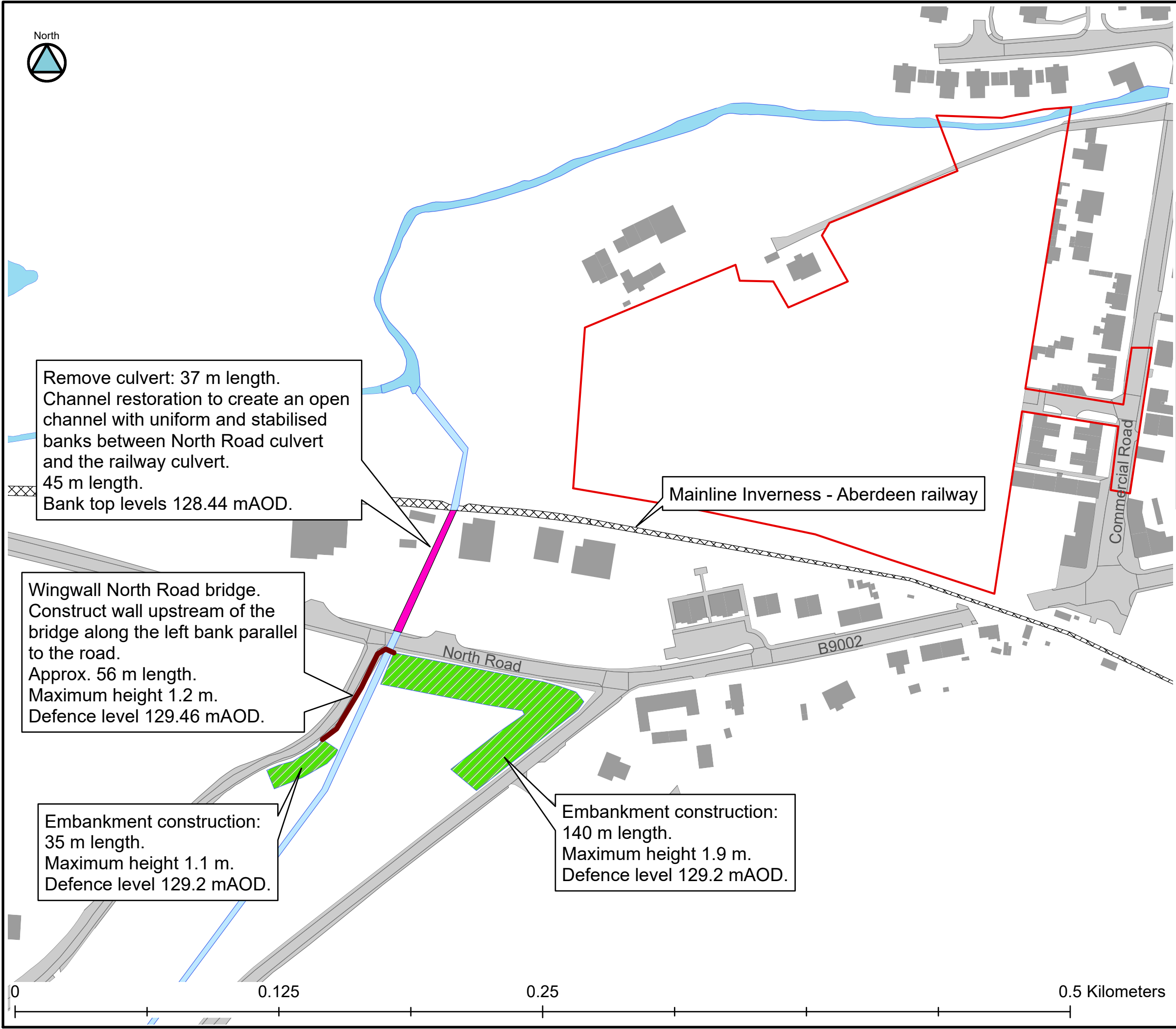
Two stage channel.
Approx. 170 m reach.

Embankment construction:
240 m length.
Maximum height 3.6 m.
Defence level 128 mAOD.
Suggested ramp access over
embankment.
Golf Terrace views will be
impacted.

Embankment construction:
65 m length.
Maximum height 1 m.
Defence level 123 mAOD.

Drumrossie Street culvert replacement:
3.5 m (w) x 0.75 m (h) x 11 m length.
Road closure required.





Remove culvert: 37 m length.
 Channel restoration to create an open channel with uniform and stabilised banks between North Road culvert and the railway culvert.
 45 m length.
 Bank top levels 128.44 mAOD.

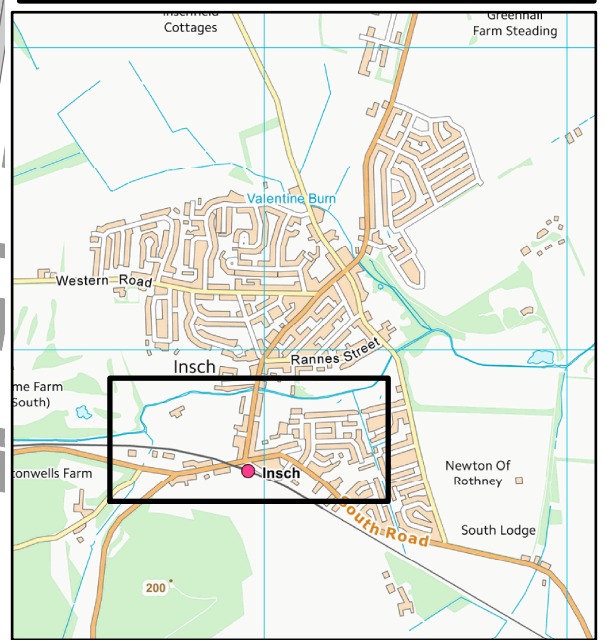
Wingwall North Road bridge.
 Construct wall upstream of the bridge along the left bank parallel to the road.
 Approx. 56 m length.
 Maximum height 1.2 m.
 Defence level 129.46 mAOD.

Embankment construction:
 35 m length.
 Maximum height 1.1 m.
 Defence level 129.2 mAOD.

Embankment construction:
 140 m length.
 Maximum height 1.9 m.
 Defence level 129.2 mAOD.

Mainline Inverness - Aberdeen railway

KEYPLAN Scale 1:25,000



LEGEND

- Wall
- Development area (housing)
- Embankment
- Open channel

0.5% AP (200 year) +CC SoP

Contains Ordnance Survey (C) Crown copyright and database right 2019



Insch - Final Options
 Option 2 - C1

Figure 2.4 (4 of 4)

Drawing no: AIZ-JBAU-IN-00-DR-HM-0007

